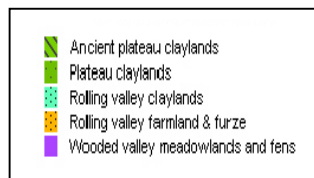
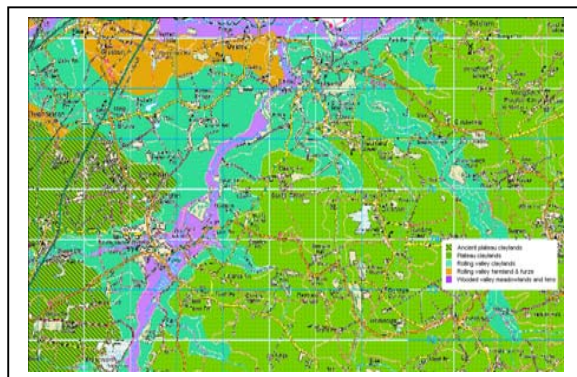


## Planting New Woodlands Protecting Archaeology & Landscape Character

Planting new woodlands has become an important way for communities across Suffolk to come together and enhance their local environment. This work has made a real active and meaningful contribution to nature conservation, and created important new areas of accessible countryside. There have been 26 projects undertaken since 1996, throughout the county. These schemes have brought people together and provided a focus for conservation work, which has often led to further community participation in other local environmental and social projects.

However, woodland has a particular place in the landscape. So this guidance has been prepared to highlight the areas in which, without careful planning and thought, woodland planting schemes can come into conflict with the protection and maintenance of historic landscape features, archaeological resources and the maintenance of local landscape distinctiveness. These are all features of the countryside that should be passed to future generations in the best possible condition, and with care and consideration, these legacies of the past can be maintained and enhanced by planting for the future.

### Landscape Character



An extract from the Suffolk Landscape Character Assessment

The location scale and style of woodland planting is a very important part of the local distinctiveness of landscapes across Suffolk. Inappropriate planting can erode this sense of place and undermine the local historic character of the landscape.

Furthermore, the inappropriate siting of new woodland may have a negative effect on important views of local landmarks, or the setting of distinctive or designed landscape features. Therefore planting proposals should be mindful of four key issues:

- 1 Is the woodland in the right location for the wider landscape?
- 2 Is the scale and shape of the proposed woodland in keeping with that of other local woodlands?

**Wooded Chalklands of West Suffolk**



**Estate Sandlands of the Lark Valley**



- 3 Is the woodland in a location that will enhance the local landscape or, will it compromise the setting or views of churches other listed buildings or villages?

